

CENTRAL NEW MEXICO IMPACT REPORT 2021



TOGETHER WE ARE BUILDING A CULTURE OF HEALTH

Presbyterian Hospital, Presbyterian Kaseman Hospital, Presbyterian Rust Medical Center and Presbyterian Community Health worked with the Bernalillo, Sandoval, Torrance and Valencia Counties' health councils to complete a Community Health Assessment (CHA) and a Community Health Implementation Plan (CHIP) for 2020-2022.

This report summarizes the progress to date on the four community-informed priorities below. For questions contact Leigh Caswell at lcaswell@phs.org.

At-a-Glance

Presbyterian's central delivery system offers a range of services throughout the Albuquerque and Rio Rancho area, all focused on improving quality and enhancing the patient experience.

**TOTAL COMMUNITY BENEFIT
NEARLY \$85 MILLION**

Priority Area 1: BEHAVIORAL HEALTH



Presbyterian's behavioral health initiatives work to address mental health and substance use to include prevention and treatment.

Peer Support Specialists engaged with:

- **713** patients at Presbyterian Hospital
- **398** patients at Presbyterian Kaseman Hospital
- **196** patients at Presbyterian Rust Medical Center
- **131** Neonatal Intensive Care Unit (NICU) family participants

- **111** people were trained in Mental Health First Aid
- In Torrance County, **25** medication lock boxes were distributed.
- In Estancia and Moriarty, **610** people were reached during National Prescription Drug Take Back Day.
- **350** behavioral health resource bags were distributed in Valencia County.

Priority Area 2: SOCIAL DETERMINANTS OF HEALTH



At Presbyterian, we recognize that improving the health of our community means addressing their needs beyond the hospital or clinic. Priority initiatives aim to address unmet social needs through connecting individuals to community resources.

11 Community Health Workers were embedded within clinics and emergency departments. The Central NM Accountable Health Communities Program assists Medicaid and Medicare beneficiaries to access free or low-cost resources to address health-related social needs.

Community Health Workers used **\$12,025** in Patient Flex Funds to support patients with housing, utilities, transportation and other needs not met through other service agencies/funds.

Healthy Food Access

- There were **283** free Uber rides to and from the Food Farmacy.
- **149,440** pounds of food were distributed, 44,291 pounds of which were locally sourced produce.
- **2,643** patients were served.
- Provided **\$15,000** in support for Three Sisters Kitchen's ReFresh produce access program.
- **65** Torrance County senior citizens engaged in the Senior Education program – including EBT, Fresh Produce and Double-up Food Bucks.





\$10,000 was provided to the Rio Grande Food Project Weekly Emergency Food Distribution, Urban Garden and Community Resource Hub.

- **13,759 food boxes** were distributed to families impacted by interpersonal violence, young people, recently housed but previously homeless residents, at-risk and homebound individuals, and the South Valley immigrant community. A total of **598,232 pounds of food** was distributed.
- Helped a total of **3,945 households** with \$620,382 in PNM Good Neighbor Fund Bill Assistance grants; enrolled or renewed total of **466 households** in the Albuquerque Bernalillo County Water Utility Authority Low-Income Credit & **Water Assistance Fund**; helped **574 households** with \$138,270 in **water bill emergency assistance**.
- **6,910** community hub items/resources were distributed/shared with clients.
- From Sep-Nov 2021, **30 SNAP** applications, **21 LIHEAP** applications, and 3 RENTHELPM applications were completed.



\$10,000 was given to support Enlace Comunitario's Domestic Violence crisis response services and prevention programs including the Youth Leaders Program, Voces Unidas – Survivor Peer Support for Spanish Speakers, Promotoras and prevention classes programs.

\$7,500 was given to support Catholic Charities providing refugee and immigration support, housing assistance, adult education, child care and more.



50 backpacks filled with food and school supplies were donated to students.

50 purses were donated to women facing difficult situations.

Priority Area 3: ACCESS TO CARE



Presbyterian's Access to Care initiatives increase individuals' ability to manage their health and navigate health and social care.

\$71,398,676 was provided in financial assistance to Central New Mexico patients receiving medical care.

\$75,000 was provided to support Healthcare for the Homeless.

Community Vaccinations

Presbyterian provided free flu and COVID-19 vaccines in areas with barriers to access to care and low vaccination rates.

- **3,527** flu shots
- **3,601** COVID-19 vaccines

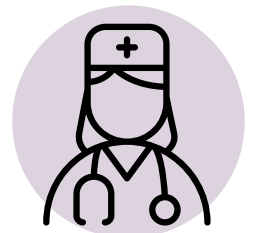
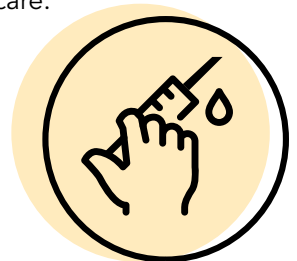
507 new Presbyterian staff members were trained in **Transgender 101 and 102**.

\$5,000 was given to support **Black Health New Mexico** and the **NM Birth Equity Collaborative**.

Nursing Scholarships

\$2,500 was donated by the **Rotary Club of Rio Rancho Sunrise**.

\$7,500 was donated by the **Sandoval Economic Alliance**.



Priority Area 4: **HEALTHY EATING AND ACTIVE LIVING (HEAL)**



Presbyterian's healthy eating and active living initiatives aim to prevent and manage chronic disease through improving access to local healthy food, health education and opportunities for physical activity.

2,570 Central New Mexico residents were referred to the Healthy Here Wellness Referral Center for free classes offered in English and Spanish including: cooking and nutrition, gardening, mindfulness, physical activity (including yoga, dance, walking and kickboxing) and chronic disease self management.

388 free healthy eating and active living classes were offered virtually.

2,261 people participated in **371** Chronic Disease Self-Management workshops offered in Spanish and English.

\$21,000 was provided to support Running Medicine – a free program that helps indigenous and non-native communities benefit from physical activity.

Free Healthy Meals for Kids

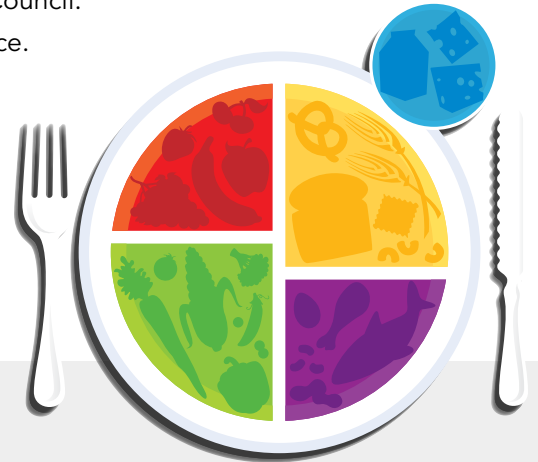
8,187 meals were served via grab-and-go curbside service with additional support from **Presbyterian Healthcare Foundation**.

158 patient nutrition counseling and education sessions with a registered dietitian were held through the Diabetes ReCharge program on diabetes management.

7 community gardens were developed in partnership with the Health Equity Council.

- The community gardens produced **105** pounds of fresh, healthy produce.

42 Home Health Aides received specialized nutrition and food preparation curriculum to benefit their clients through the Harvest to Health/Connectando Cosesechas con la Salud program as of December 2021.



STATEWIDE IMPACT 2021

Vaccination From the Misinformation Virus

A comprehensive media campaign to combat vaccine misinformation.

New Mexico Alliance of Health Councils

An organization that supports and advocates for New Mexico's 42 county and tribal health councils, helping communities to identify and address local health priorities.

National Alliance on Mental Illness New Mexico

Peer-led mental health support groups, education, and advocacy



\$45,000



\$50,000



\$145,000



\$10,000

1,2,3 Eyes on Me

New Mexico Appleseed

A pilot program focused on addressing physical and social-emotional needs of New Mexican children during the COVID-19 pandemic.

- 15 events across the state
- 150 Federal program sign-ups (SNAP and referrals)
- 8,000 students & 2,500 parents impacted
- 430 COVID vaccines & 300 immunizations given
- 40,000 online interactions
- 120 dental exams and 85 eye exams
- 1,800 50-pound boxes of food and 8,500 meals distributed

**In addition to Community Benefit funding, these programs and initiatives are funded in part by Presbyterian Healthcare Foundation; US Department of Agriculture; New Mexico Early Childhood Education & Care Department, the New Mexico Department of Health; Centers for Medicare & Medicaid Services; Administration for Community Living (ACL), U.S. Department of Health and Human Services; and Centers for Disease Control and Prevention.*