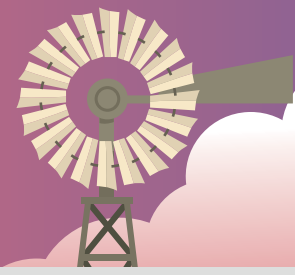


CURRY COUNTY IMPACT REPORT 2021



At-a-Glance

PRMC offers a range of services focused on improving quality, enhancing the patient experience and providing care close to home for Curry County and West Texas residents.

TOTAL COMMUNITY BENEFIT

\$14.2 MILLION
(including
unreimbursed
care)

TOGETHER WE ARE BUILDING A CULTURE OF HEALTH

Plains Regional Medical Center (PRMC) and Presbyterian Community Health worked with the Curry County Health Council and many other community partners in Curry County to complete a Community Health Assessment (CHA) and Community Health Improvement Plan (CHIP) for 2020-2022.

This report summarizes the progress to date on the four community-informed priorities below. If you have questions, contact Meredith Root Bowman at mrootbowm@phs.org.

Priority Area 1: BEHAVIORAL HEALTH



Presbyterian's behavioral health initiatives work to address mental health and substance use to include prevention and treatment.

Peer Opioid Program Virtual Support:

Peer Support Specialists and Community Health Workers partner to assist patients who arrive in the emergency department with an opioid overdose or a substance/mental health-related episode.

Peer Support Specialists virtually supported **18** patients in 2021.

Priority Area 2: SOCIAL DETERMINANTS OF HEALTH



At Presbyterian, we recognize that improving the health of our community means addressing their needs beyond the hospital or clinic. Priority initiatives aim to address unmet social needs through connecting individuals to community resources.

- **410** Thanksgiving meals were provided through the **Health Council Emergency Holiday Food Distribution** to address family food insecurity.
- **400** hygiene kits and **192** personal care backpacks were distributed to people experiencing homelessness via community organizations.



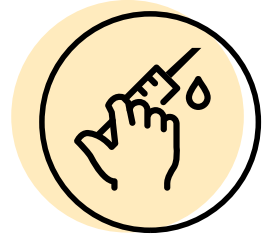
Priority Area 3: ACCESS TO CARE



Presbyterian's Access to Care initiatives increase individuals' ability to manage their health and navigate health and social care.

Presbyterian provided free flu and COVID-19 vaccines in areas with barriers to access to care and low vaccination rates.

- **463** flu shots were given to PRMC hospital employees.
- **57** shots were given to community members during the Presbyterian free flu shot clinic.
- **3,277** COVID-19 and flu shot vaccinations were administered at PRMC sites.



Priority Area 4: HEALTHY EATING AND ACTIVE LIVING (HEAL)



Presbyterian's healthy eating and active living initiatives aim to prevent and manage chronic disease through improving access to local healthy food, health education and opportunities for physical activity.

6,161 meals were served out of the PRMC cafeteria through the Healthy Meals for Kids Program.

Started a human milk donation and outreach center, which means Clovis-area mothers can make a difference in babies' lives by donating excess breast milk. The effort is a partnership with Mothers' Milk Bank, a Colorado-based non-profit benefiting women and babies nationwide.

Continued support for the Clovis Community Garden located on the PRMC campus.



STATEWIDE IMPACT 2021

Vaccination From the Misinformation Virus

A comprehensive media campaign to combat vaccine misinformation.



\$45,000



\$50,000



\$145,000



\$10,000

New Mexico Alliance of Health Councils

An organization that supports and advocates for New Mexico's 42 county and tribal health councils, helping communities to identify and address local health priorities.

National Alliance on Mental Illness New Mexico

Peer-led mental health support groups, education, and advocacy

1,2,3 Eyes on Me

New Mexico Appleseed

A pilot program focused on addressing physical and social-emotional needs of New Mexican children during the COVID-19 pandemic.

- 15 events across the state
- 150 federal program sign-ups (SNAP and referrals)
- 8,000 students and 2,500 parents impacted
- 430 COVID vaccines and 300 immunizations given
- 40,000 online interactions
- 120 dental exams and 85 eye exams
- 1,800 50-pound boxes of food and 8,500 meals distributed

*In addition to Community Benefit funding, these programs and initiatives are funded in part by Presbyterian Healthcare Foundation; U.S. Department of Agriculture; New Mexico Early Childhood Education & Care Department and the New Mexico Department of Health.