

DETERMINED TO MAKE NEW MEXICO HEALTHIER.

PRESBYTERIAN
Española Hospital



Presbyterian Española Hospital Report to the Community 2023

WHO WE ARE

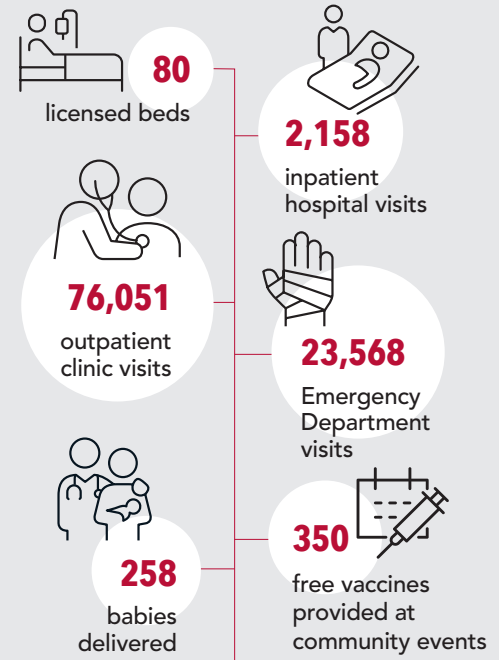
Presbyterian Española Hospital, an acute-care hospital owned and managed by Presbyterian Healthcare Services since 1977, serves a diverse population of patients in northern New Mexico from the Española Valley, Rio Arriba County, Santa Fe and Los Alamos. Over the years, the hospital has expanded to meet the growing and changing needs of its patients.

OUR SERVICES

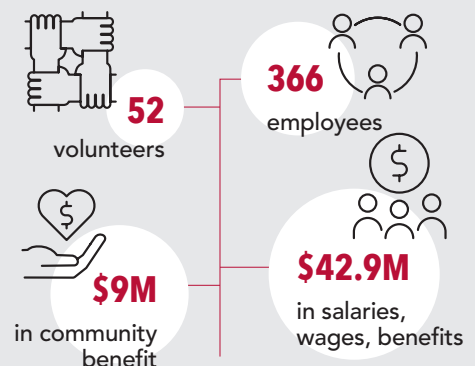
At Presbyterian Española Hospital, the following medical specialties are offered by Presbyterian Medical Group: Family Medicine, Internal Medicine, Same-Day Care Clinic, General Surgery, Addiction Medicine, Colon and Rectal Surgery, Endocrinology, Orthopedics, Pediatrics, Podiatry, Pulmonology Medicine, Rehabilitation, Sleep Medicine, Urology, Obstetrics and Gynecology, and Cardiology Telehealth.



COMMUNITY CARE BY THE NUMBERS



COMMUNITY CONTRIBUTION BY THE NUMBERS



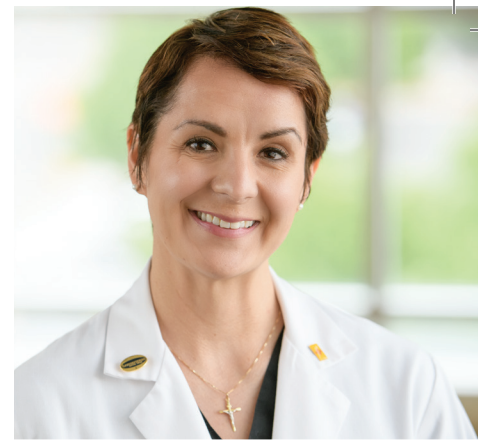
CARING FOR OUR COMMUNITY

- In 2023, we were recognized by the New Mexico Hospital Association for our ongoing efforts to address alcohol use disorders and connect patients and families to peer support resources.
- For the past decade, we have worked to improve food access and nutrition, most recently through Northern Roots, a produce prescription program for patients in need in Española and Santa Fe.
- In 2023, we were recognized as the second-most socially responsible hospital in New Mexico by the Lown Institute, a nonprofit health organization that graded some 4,000 hospitals nationwide on such things as patient outcomes, value of care and health equity.

COMMUNITY OVERSIGHT

As a not-for-profit hospital, Presbyterian Española Hospital is owned by the communities we serve and is overseen by a Board of Trustees made up of the following community members, along with Brenda Romero, our chief hospital executive officer:

- Tess Casados, chair
- Gail Douglas
- Gregg Ferran
- George Gutierrez
- Mary Beth Lujan
- Lonnie Sanchez
- Michael R. Valdez, MD



We have been designated a Baby-Friendly® hospital because of our care for mothers and babies, which includes support for breastfeeding.

Presbyterian Española Hospital
1010 Spruce St.
Española, NM 87532
(505) 753-7111
phs.org/espanola

 **PRESBYTERIAN**
Española Hospital

Presbyterian Healthcare Services is determined to help our patients, members and communities achieve their best health.