

# DETERMINED TO MAKE NEW MEXICO HEALTHIER.

 **PRESBYTERIAN**  
Santa Fe Medical Center



## Presbyterian Santa Fe Medical Center Report to the Community 2023

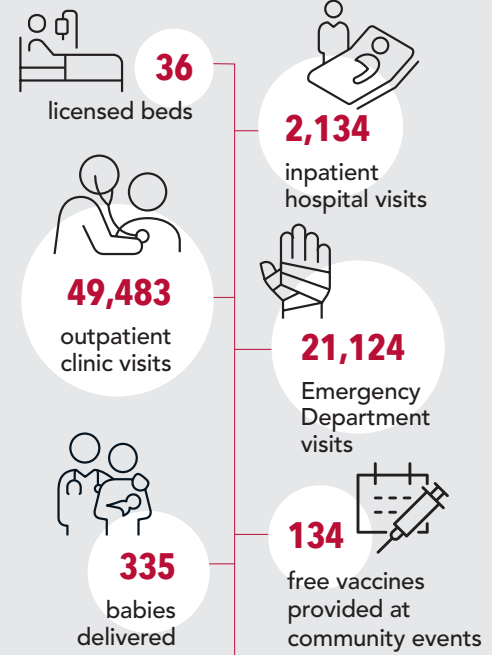
### WHO WE ARE

**Presbyterian Santa Fe Medical Center** is an acute-care hospital in Santa Fe that has been owned and operated by Presbyterian Healthcare Services since 2018. In Santa Fe County and northern New Mexico, we offer a wide range of healthcare services, including inpatient and emergency care, a family birthing center, surgical services, and primary and specialty care. In addition, we provide community outreach programs that include peer support, a teaching kitchen, and a food prescription program for patients in need.

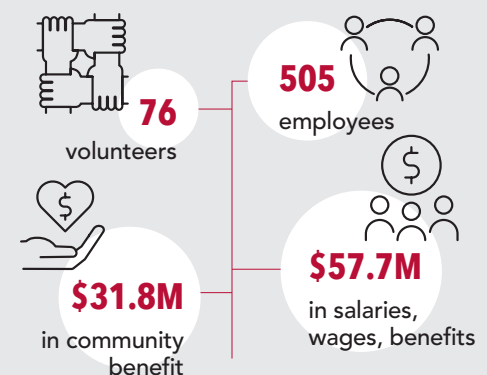
### OUR SERVICES

At Presbyterian Santa Fe Medical Center, the following medical specialties are offered by Presbyterian Medical Group: Family Medicine; Internal Medicine; Family Medicine Skin Care; Behavioral Health; Cardiology, including Cardiac CT for advanced cardiac imaging; Colon and Rectal Surgery; Congenital Cardiology; Endocrinology; Gastroenterology; General Surgery; Infusion Services; Laboratory; Orthopedics and Orthopedic Surgery; Pediatrics; Pulmonology; Radiology; Rehabilitation therapies; Rheumatology; Sleep Medicine; Women's Health, including Obstetrics and Gynecology; Stroke Care; Pain Management; Urgent Care; and Adult Intensive Care Unit (ICU).

### COMMUNITY CARE BY THE NUMBERS



### COMMUNITY CONTRIBUTION BY THE NUMBERS



## CARING FOR OUR COMMUNITY

- In 2023, we were recognized as the most socially responsible hospital in New Mexico by the Low Institute, a nonprofit health organization that graded some 4,000 hospitals nationwide on such things as patient outcomes, value of care and health equity.
- In 2023, we earned a four-star rating (the highest given in New Mexico) for overall quality and patient satisfaction from the Centers for Medicare and Medicaid Services.
- We offer healthy cooking classes in our on-site teaching kitchen.
- In 2023, we completed expansion of our Post-Anesthesia Care Unit (PACU).



## COMMUNITY OVERSIGHT

**Presbyterian Santa Fe Medical Center is overseen by a Board of Trustees** made up of the following community members:

- Brian Fantl, chair
- Tracy Hartzler, vice chair
- Norman P. Becker
- Christine Cassel, MD
- V. Sue Cleveland
- Monique Garcia, MD
- Mary Romero Hart
- Tim Johnsen
- Christopher Loucks, MD
- Janice Lucero
- Lauren Madigan
- Eric Magaña, MD
- Thao Marquez, MD
- Patricia Montoya
- Scottie Pierce
- Jessica Tsabetsaye
- John Van Drimmelen
- Walter Voigt, MD



In 2023, we added teleneurology, telestroke, pain management and cardiac CT scanning services, some of which are provided by independent community providers.

Presbyterian Santa Fe Medical Center  
4801 Beckner Road  
Santa Fe, NM 87507  
(505) 772-1234  
[pchs.org/santafe](https://pchs.org/santafe)

 **PRESBYTERIAN**  
Santa Fe Medical Center

Presbyterian Healthcare Services is determined to help our patients, members and communities achieve their best health.