



# PRESBYTERIAN ESPAÑOLA HOSPITAL REPORT TO THE COMMUNITY 2025

## WHO WE ARE

**Presbyterian Española Hospital (PEH)**, an acute-care hospital owned and managed by nonprofit Presbyterian Healthcare Services since 1977, serves a diverse population of patients in northern New Mexico from the Española Valley, Rio Arriba County, Santa Fe and Los Alamos. Over the years, the hospital has expanded to meet the growing and changing needs of its patients.

## OUR SERVICES

**At PEH, the following medical specialties are offered by Presbyterian Medical Group:** addiction medicine, colonoscopy, diabetes education, endocrinology, family medicine, general surgery, infusion clinic, internal medicine, obstetrics and gynecology, orthopedics, pediatrics, podiatry, pulmonology, same-day care clinic, sleep medicine, and urology.

## CARING FOR OUR COMMUNITY

As a community-based healthcare provider, our focus is to provide safe, compassionate and equitable care that keeps our patients and members healthy.

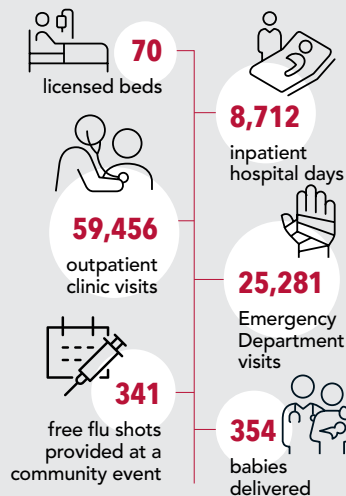
- In 2025, we significantly expanded our addiction medicine services with a larger clinic, more providers and increased capacity to reach more patients and address the region's high rates of substance use.
- We received a CMS 5-star rating for cleanliness based on a recent Hospital Consumer Assessment of Healthcare Providers and Systems patient survey.
- The Lown Institute awarded us an A grade in social responsibility reflecting outstanding performance across health equity, value and patient outcomes, placing us among top-performing U.S. hospitals.
- We partnered with the American Heart Association to present a Hands-Only CPR kit to the Rio Arriba County 4-H Club. This kit will equip the youth development program to train hundreds of rural New Mexicans in this lifesaving skill.
- We received the Commitment to Community Healthcare Award from the New Mexico Hospital Association for closing gaps in care, strengthening social safety nets and expanding awareness of physical and mental health.
- We added a Narcan vending machine in the emergency department. The machine provides free, 24/7 access to this life-saving medication that rapidly reverses an opioid overdose.
- The Joint Commission awarded us the Maternal Levels of Care Level I: Basic Care designation. The Maternal Levels of Care Verification program provides an objective assessment of a facility's capabilities with regard to maternal-fetal care.
- We continued our community outreach work by providing meals to YMCA kids, offering a free drive-thru flu shot clinic and sponsoring the Bridge to Health Financial Literacy Empowerment Fair.

## COMMUNITY OVERSIGHT

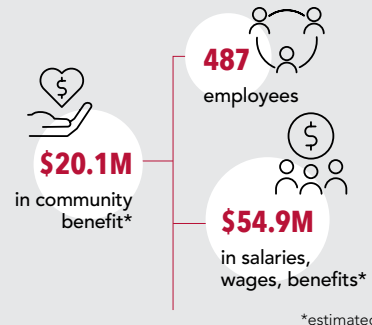
**PEH is overseen by a Board of Trustees** made up of these community members, along with Brenda Romero, our hospital chief executive:

- Tess Casados
- George Gutierrez
- Lonnie J. Sanchez
- Gail Douglas
- Mary Beth Lujan
- Mark Trujillo
- Gregg Ferran
- Mikell Romero
- Michael Valdez, MD

### COMMUNITY CARE BY THE NUMBERS



### COMMUNITY CONTRIBUTION BY THE NUMBERS



Presbyterian Española Hospital  
 1010 Spruce St.  
 Española, NM 87532  
 (505) 753-7111  
[pchs.org/espanola](https://pchs.org/espanola)