



DETERMINED TO CARE FOR NEW MEXICANS



PRESBYTERIAN

Santa Fe Medical Center

PRESBYTERIAN SANTA FE MEDICAL CENTER REPORT TO THE COMMUNITY 2024

WHO WE ARE

Presbyterian Santa Fe Medical Center is an acute-care hospital in Santa Fe that has been owned and operated by Presbyterian Healthcare Services since 2018. In Santa Fe County and northern New Mexico, we offer a wide range of healthcare services, including inpatient and emergency care, a family birthing center, primary and specialty care, and community outreach programs that include peer support, a teaching kitchen, and a food prescription program for patients in need.

OUR SERVICES

At Presbyterian Santa Fe Medical Center and Presbyterian Medical Group St. Michael's locations, the following medical specialties are offered: family medicine, internal medicine, behavioral health, cardiology, including cardiac CT for advanced cardiac imaging, colon and rectal surgery, endocrinology, family medicine skin care, gastroenterology, general surgery, infusion services, laboratory, orthopedics and orthopedic surgery, pain management, pediatrics, pulmonology, radiology, rehabilitation therapies, rheumatology, sleep medicine, women's health, including obstetrics and gynecology, urgent care, and an Adult Intensive Care Unit (ICU).

CARING FOR OUR COMMUNITY

- In 2024, Presbyterian Santa Fe Medical Center (SFMC) started offering robotic-assisted surgeries, using the da Vinci XI advanced and integrated robot designed for minimally invasive procedures. Specialties using the new system include colorectal surgery, general surgery and urogynecology, with plans to add additional specialties like urology in 2025.
- We were recognized by the Lown Institute, a nonprofit health organization, for outstanding social responsibility, receiving an "A" grade. The rankings grade hospitals on more than 50 metrics across patient outcomes, value of care, and health equity.
- Partnering with Safer New Mexico and working with local shelters and other groups, we provide car seats to any community members in need of one. To date, we have provided more than 400 car seats.
- Our community health team has distributed more than 2,111 bags of fresh food to patients and their families since our Northern Roots program began. Under the program, physicians can prescribe 16 weeks of local fruit, vegetables and pantry items to patients in need. The food is picked up at our hospital, where hands-on nutrition education also is offered.

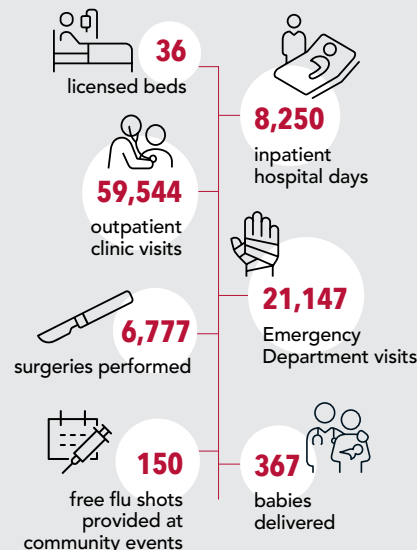
Another priority for us is to address the healthcare worker shortage while engaging and retaining our talented team. Nine new providers joined SFMC, including five Family Practice professionals. And 16 of our SFMC providers were recognized by patients with Guardian Angel awards, which allow patients to express gratitude for a Presbyterian employee who made a difference in their lives.

COMMUNITY OVERSIGHT

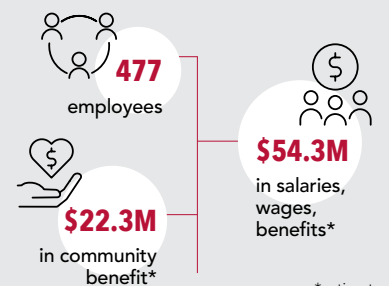
Presbyterian Santa Fe Medical Center is overseen by a Board of Trustees made up of these community members:

- | | | |
|---------------------------|--------------------------|----------------------------|
| • Christine Cassel, MD | • Tracy Hartzler | • Scottie Pierce |
| • V. Sue Cleveland | • Christopher Loucks, MD | • Mary Romero Hart |
| • Brian Fantl | • Janice Lucero | • Jessica Tsabetsaye, PA-C |
| • Angelina Flores-Montoya | • Eric Magaña, MD | • John Van Drimmelen |
| • Monique Garcia | • Thao Marquez, MD | • Walter Voigt, MD |

COMMUNITY CARE BY THE NUMBERS



COMMUNITY CONTRIBUTION BY THE NUMBERS



*estimated

Presbyterian Santa Fe
Medical Center
4801 Beckner Road
Santa Fe, NM 87507
(505) 772-1234
phs.org/santafe