

DETERMINED TO CARE FOR NEW MEXICANS



PRESBYTERIAN

Plains Regional Medical Center

PLAINS REGIONAL MEDICAL CENTER REPORT TO THE COMMUNITY 2024

WHO WE ARE

Plains Regional Medical Center (PRMC) is an acute-care hospital in Clovis that has been owned and operated by nonprofit Presbyterian Healthcare Services since 1975. The hospital has a long tradition of delivering patient care to Clovis, eastern New Mexico, West Texas and Curry County. In our hospital and clinic practices, we offer a wide range of medical specialties.

OUR SERVICES

At PRMC, the following medical specialties are offered by Presbyterian Medical Group: family medicine, internal medicine, behavioral health, same-day care clinic, cardiology, diabetes education, family medicine skin care, gastroenterology, general surgery, hematology and oncology, infusion services, nephrology, obstetrics and gynecology, orthopedics and orthopedic surgery, pediatrics, podiatry, pulmonology, radiation oncology, and urology.

CARING FOR OUR COMMUNITY

As a community-based healthcare provider, our focus is to provide safe, compassionate and equitable care that keeps our patients and members healthy.

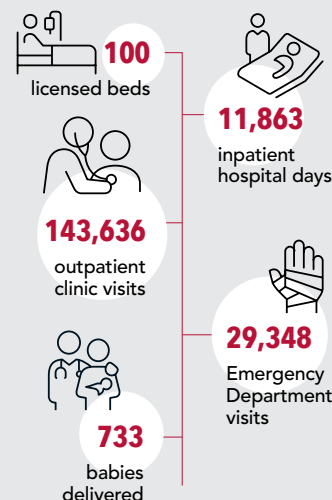
- In 2024, we added cardiology services, including inpatient cardiac care and clinic appointments with a cardiologist. In addition, we added cardiac and pulmonary rehabilitation.
- To help Curry County residents get to know the services available at PRMC, we offered a series of free community education events with local healthcare providers. These free monthly "Doc Talk" events included topics such as cardiology, pediatrics, behavioral health, gastroenterology and women's care.
- PRMC initiated family medicine skin care, allowing community members to stay close to home when receiving skin care, one of the most limited medical specialties in the state.
- Our talented team was joined by a full-time radiation oncologist, helping community members to receive cancer care without having to travel out of town, and a psychiatrist and psychologist, who provide outpatient behavioral health services.

COMMUNITY OVERSIGHT

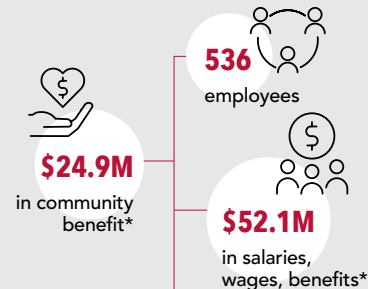
PRMC is overseen by a Board of Trustees made up of these community members, along with Bill Priest, our hospital chief executive:

- Chris Bryant
- Brad Bender
- Col. Danielle Cermak
- Diana Cordova
- Devin Wahlen, DPM
- Paul Ellis
- Alan Kinlund
- Lonnie Leslie
- Anthony Mahan
- Joyce Pollard
- Larry Roberts

COMMUNITY CARE BY THE NUMBERS



COMMUNITY CONTRIBUTION BY THE NUMBERS



*estimated

Plains Regional Medical Center
2100 N. Martin Luther King Jr. Blvd.
Clovis, NM 88101
(575) 769-2141
phs.org/clovis