



# DETERMINED TO CARE FOR NEW MEXICANS



**PRESBYTERIAN**

Lincoln County Medical Center

## LINCOLN COUNTY MEDICAL CENTER REPORT TO THE COMMUNITY 2024

### WHO WE ARE

**Lincoln County Medical Center (LCMC)** is a county-owned critical-access hospital that has been leased and managed by nonprofit Presbyterian Healthcare Services (PHS) since 1972. This partnership is dedicated to helping improve the health of individuals, families and communities in Ruidoso and Lincoln County. We operate a hospital, primary care clinic and a specialty clinic in Ruidoso; primary care clinics in Capitan, Carrizozo, Corona and Hondo; and a countywide ambulance service in Lincoln County.

### OUR SERVICES

**At LCMC, the following medical specialties are offered:** family medicine, internal medicine, cancer care, cardiology, general surgery, infusion services, laboratory, orthopedics and orthopedic surgery, radiology, physical, occupational and speech therapies, behavioral healthcare, wound care, and women's care.

### CARING FOR OUR COMMUNITY

As a community-based healthcare provider, our focus is on providing safe, compassionate and equitable care that keeps our patients and members healthy. In 2024:

- Lincoln County Medical Center started construction on our new women's care facility, which will offer a wide range of women's healthcare, including obstetrics, when it opens in 2025.
- We purchased a new 128-slice CT scanner, a medical imaging device that uses X-rays to create detailed cross-sectional images of the body, resulting in faster and higher-resolution scans.
- LCMC was awarded \$943,000 from the state Rural Healthcare Delivery Fund to help provide more behavioral healthcare in the area. With the funding, an adult psychiatrist, a child psychiatrist and a behavioral health counselor were added to staff.
- In a patient satisfaction survey in 2024, more than 97 percent of our clinic patients said they would recommend LCMC providers for care. Additionally, more than 94 percent of patients said they feel care is accessible when needed.

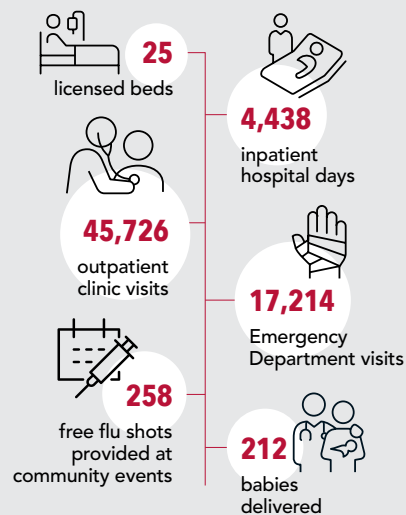
Another priority for us is to create a pipeline for the future healthcare workforce while also engaging and retaining our talented team. Since 2017 LCMC has hosted eighth graders from Ruidoso Municipal Schools and Capitan Municipal Schools at a "MASH" camp. These "Making Another Student of Healthcare" camps offer students a hands-on opportunity to learn about healthcare careers. Eighty-two students attended sessions in 2024 and more than 40 percent of the students in Ruidoso High's 2023 graduating class who attended a camp said they wanted to pursue a healthcare career after graduation.

### COMMUNITY OVERSIGHT

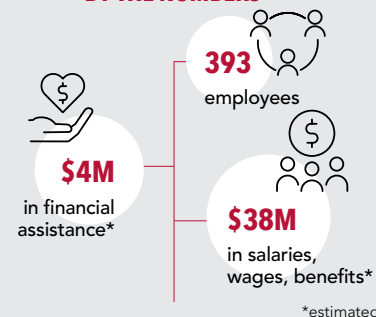
**LCMC is overseen by a Board of Trustees** made up of these community members, along with Todd Oberheu, our hospital chief executive:

- |                         |                    |                  |
|-------------------------|--------------------|------------------|
| • Suzanne Dennehey, APC | • Gary Jackson, DO | • Gary Mitchell  |
| • Mark Flack            | • Betty Leonard    | • Tom H. Rigsby  |
| • Lori Gibson-Willard   | • Marsha Kirk      | • Alberto Robles |
| • Leslie Graham         | • Kyle McCombs, MD | • Scott Shafer   |

#### COMMUNITY CARE BY THE NUMBERS



#### COMMUNITY CONTRIBUTION BY THE NUMBERS



Lincoln County Medical Center  
211 Sudderth Drive  
Ruidoso, NM 88345  
(575) 257-8200  
[phs.org/ruidoso](https://phs.org/ruidoso)