

SOCORRO COUNTY IMPACT REPORT 2020



TOGETHER WE ARE BUILDING A CULTURE OF HEALTH

Presbyterian Socorro General Hospital and Presbyterian Community Health worked with the Socorro County Options, Prevention, and Education (SCOPE) Health Council to complete a Community Health Assessment (CHA) and a Community Health Implementation Plan (CHIP) for 2020-2022.

This report summarizes the progress to date on the four community-informed priorities below. For questions contact Beth Beers at bbeers@phs.org or Meredith Root-Bowman at mrootbowm@phs.org.

At-a-Glance

Socorro General Hospital offers a range of services focused on improving quality, enhancing the patient experience, and providing care close to home for Socorro County residents.

TOTAL COMMUNITY BENEFIT
\$6,394,789



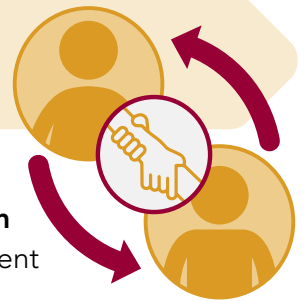
Priority Area 1: BEHAVIORAL HEALTH

Presbyterian's behavioral health initiatives work to address mental health and substance use to include prevention and treatment.

- 215 clinical encounters took place for infant mental health
- 1,897 clinical encounters for senior mental health took place through the **Heritage Program**
- 7 providers trained and licensed to prescribe buprenorphine for medication-assisted treatment
- 10 people were trained on the distribution of naloxone
- 1,350 mental health resource brochures were distributed
- 1,600 people reached on Facebook through the **#JustTalk** mental health campaign

Building Positive Youth Development and Family Resilience Through the First Born Program:

- 78 bassinets distributed
- 18 parenting support groups and classes were held
- 1,978 home visits were conducted



Priority Area 2: SOCIAL DETERMINANTS OF HEALTH

At Presbyterian, we recognize that improving the health of our community means addressing their needs beyond the hospital or clinic. Priority initiatives aim to address unmet social needs through connecting individuals to community resources.

- 23 car seats distributed
- 1,669 people reached through Facebook for **Warrior Wellness Food Pantry Partnership** awareness and outreach
- 100 shopping bags donated to package food for the **New Mexico Tech Food Insecurities Thanksgiving boxes**
- \$267.37 used to help pay cell phone bills through the **Magdalena Wellness Program**





Priority Area 3: ACCESS TO CARE

Presbyterian's Access to Care initiatives increase individuals' ability to manage their health and navigate health and social care.



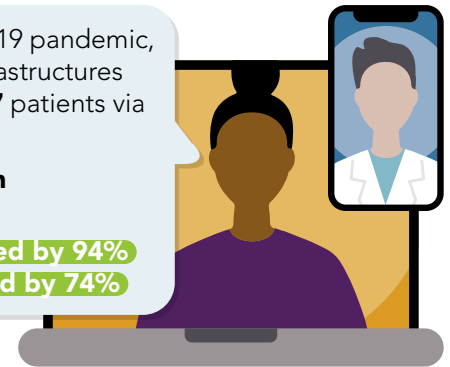
Community Flu Shots Given

368 adult flu shots
186 child flu shots

In response to the COVID-19 pandemic, Presbyterian used new infrastructures to provide care to **469,637** patients via telephone and video.

Use of existing telehealth platforms also increased:

PHS Online Visits **increased by 94%**
PHP Video Visits **increased by 74%**



Priority Area 4: HEALTHY EATING AND ACTIVE LIVING (HEAL)

Presbyterian's healthy eating and active living initiatives aim to prevent and manage chronic disease through improving access to local healthy food, health education and opportunities for physical activity.

620 meals served through **Free Healthy Meals for Kids**



59 pounds of produce harvested



2 garden beds planted

915 food resource guides distributed to community members

789 people reached through Facebook advertising for the **Socorro Farmers' Market and Bountiful Baskets** promotion

Responding to Community Needs during the COVID-19 Pandemic

372 monthly care packages were distributed in Socorro County. Packages and support included:

- **6,500** pounds of food, household supplies, masks and hand sanitizer from **Operation Bandana**
- Hand sanitizer, masks and informational brochures from **New Mexico Tech**
- **500** dozen eggs from local dentist **Dr. Duane H. Beers, DMD**
- Christmas care package donations of toys, food, clothing and crafts
- **\$7,500** raised to help fill care packages
- **34** Thanksgiving meals and Christmas packages delivered to seniors/disabled adults
- **\$580** raised in support for Socorro Storehouse food

SCOPE Health Council relief contributions:

- **798** gallons of hand sanitizer
- **1,550** face masks
- **852** face shields
- **\$250** in support for **Magdalena Schools** student relief



*In addition to Community Benefit funding, these programs and initiatives are funded in part by Presbyterian Healthcare Foundation, US Department of Agriculture, New Mexico Early Childhood Education & Care Department and the New Mexico Department of Health.