

# RIO ARRIBA COUNTY IMPACT REPORT 2020



## At-a-Glance

Presbyterian Española Hospital offers a range of services focused on improving quality, enhancing the patient experience, and providing care close to home for Rio Arriba County residents.

**TOTAL COMMUNITY BENEFIT**  
**\$9,019,817**

## TOGETHER WE ARE BUILDING A CULTURE OF HEALTH

Presbyterian Española Hospital and Presbyterian Community Health worked with the Rio Arriba Health Council and many other community partners in Rio Arriba County to complete a Community Health Assessment (CHA) and Community Health Improvement Plan (CHIP) for 2020-2022.

This report summarizes the progress to date on the four community-informed priorities below. For questions contact Carrie Thielen at [cthielen@phs.org](mailto:cthielen@phs.org).



### Priority Area 1: BEHAVIORAL HEALTH

Presbyterian's behavioral health initiatives work to address mental health and substance use to include prevention and treatment.

Introduced in Española in October 2020, the **Peer Opioid Project** serves individuals that come into the Emergency Department with an opioid overdose or substance-related episode. A **Peer Support Specialist**, an individual with lived experience, assists patients in finding appropriate substance use treatment and harm reduction programs.

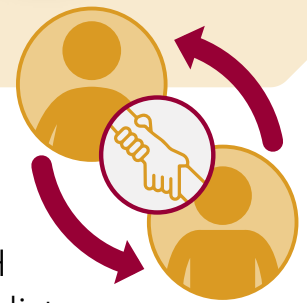
To further support this work, in partnership with the **Rio Arriba Health Council**, **\$10,000** went to improving services and resources for patients that present to the PEH Emergency Department with an overdose through increased referrals, tracking and coordination between community organizations.

**100 PATIENTS**

engaged with a PEH Peer Support Specialist

**43% OF WHICH**

accepted peer support services



### Priority Area 2: SOCIAL DETERMINANTS OF HEALTH

At Presbyterian, we recognize that improving the health of our community means addressing their needs beyond the hospital or clinic. Priority initiatives aim to address unmet social needs through connecting individuals to community resources.

Presbyterian Community Health and Presbyterian Healthcare Foundation were selected for a **\$200,000** innovation grant from **Share Our Strength No Kid Hungry** to increase access to healthy food for families who experience food insecurity.



Presbyterian will pilot **Northern Roots: Where Families Eat, Learn and Grow**, a food insecurity screening and referral project that connects patients to local fresh fruits and vegetables at no cost and provides emergency feeding and nutrition assistance information. This program is in partnership with **MoGro**, a non-profit mobile grocery, and **Cooking with Kids**, which offers community-based cooking classes.



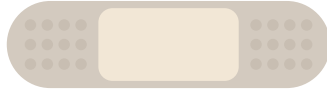


### Priority Area 3: ACCESS TO CARE

Presbyterian's Access to Care initiatives increase individuals' ability to manage their health and navigate health and social care.

**Baby-Friendly Designation:** Presbyterian Española Hospital successfully achieved Baby-Friendly USA designation after four years of hard work. Baby-Friendly designation means that a maternity facility has successfully implemented the "Ten Steps to Successful Breastfeeding" that provides appropriate education to enable families to make informed decisions about infant feeding.

### Community Flu Shots

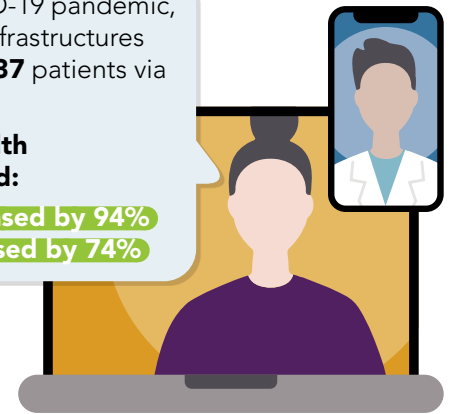


**2,088** flu shots given at events including the annual health fair

In response to the COVID-19 pandemic, Presbyterian used new infrastructures to provide care to **469,637** patients via telephone and video.

#### Use of existing telehealth platforms also increased:

PHS Online Visits **increased by 94%**  
PHP Video Visits **increased by 74%**



### Priority Area 4: HEALTHY EATING AND ACTIVE LIVING (HEAL)

Presbyterian's healthy eating and active living initiatives aim to prevent and manage chronic disease through improving access to local healthy food, health education and opportunities for physical activity.



Presbyterian Española Hospital is helping youth thrive by providing healthy meals and snacks, Monday through Friday, in a safe and caring environment at the **YMCA Teen Center**.

#### Cooking with Kids Partnership

In 2020, Presbyterian provided **\$10,000** in funding to support Cooking with Kids nutrition education programming to **5,379** public elementary students in Santa Fe and Rio Arriba, both in-person and virtually.



### Responding to Community Needs during the COVID-19 Pandemic

Presbyterian Española Hospital responded to community needs during the pandemic by:

- Providing COVID-19 testing sites
- Increased patient capacity, including the number of beds, so patients could stay in town for their care
- Offering emotional support for patients and families through the use of tablet devices
- Began working on a strategy and plan to help provide flu and COVID-19 vaccines, when available, to the most vulnerable populations

#### Sponsorships:

- **\$1,500** for The Family YMCA Red, Black and Wild West Ball
- **\$1,000** for Chamber of Commerce Banquet
- **\$500** for the Soup Kitchen Chili Bowl Contest
- **\$1,500** for the Rio Arriba County Fair Association
- **\$500** for Fiesta de Española



\*In addition to Community Benefit funding, these programs and initiatives are funded in part by Presbyterian Healthcare Foundation and the New Mexico Department of Health.